

CR MINERALS PROPRIETARY LIMITED

# MINING & MINERAL

## EXPLORATION SERVICES

Cobalt, Copper, Gold, Diamond, Iron Ore, Manganese,  
Nickel, Rare Earths Elements, Rhodium, Silver, Lithium &  
All Gemstones

COMPANY PROFILE



More information call us:

**+267 71 649 534**



[info@crminerals.co.bw](mailto:info@crminerals.co.bw)

[www.crminerals.co.bw](http://www.crminerals.co.bw)

Cr Minerals Proprietary Limited

## COMPANY DETAILS

- › Company Name:  
**Cr Minerals Proprietary Limited**
- › Company Number:  
**BW00005023212**
- › Incorporation Date:  
**5th of June, 2023**
- › Company Type:  
**Private Company**
- › Managing Director:  
**Carly Ramothhaka**
- › Mobile Phone:  
**+267 71 649 534**
- › Email Address:  
**[info@crminerals.co.bw](mailto:info@crminerals.co.bw)**

## COMPANY OVERVIEW

**Cr Minerals Proprietary Limited** was established as a fully registered company in Botswana on the 5th of June, 2023 to provide specialist mining works & exploration services to the mining and mineral industry. The company intend to gained a solid reputation in the mining sector and in civil engineering projects associated with all minerals not limited to:

**Cobalt, Copper, Gold, Iron Ore, Manganese, Nickel, Rare Earths Elements, Rhodium, Silver and All Germstones Mining.** Cr Minerals intend to deliver bulk earthworks projects and contract mining services on schedule and to high standards of proficiency. Cr Minerals views each project is independent to uniquely meet the client's requirements and provides expertise and equipment to achieve objectives, schedules and scope of works. The company personnel have many years of experience & have acquired knowledge in efficient mining & exploration practices particularly in the precious metals and germstones operations, drilling, blasting and earthworks.

## COMPANY VISION

Cr Minerals has a vision of becoming one of the foremost mining contractor in the Southern African region. Cr Minerals's executives are committed to this vision and actively seeking company accreditation to international standards.

## COMPANY MISSION

Our mission is to accomplish our vision and objective by continuous self improvement and training to develop our employees, who are our greatest assets, to international standards in all aspects of mining including safety, environmental, engineering and productivity.

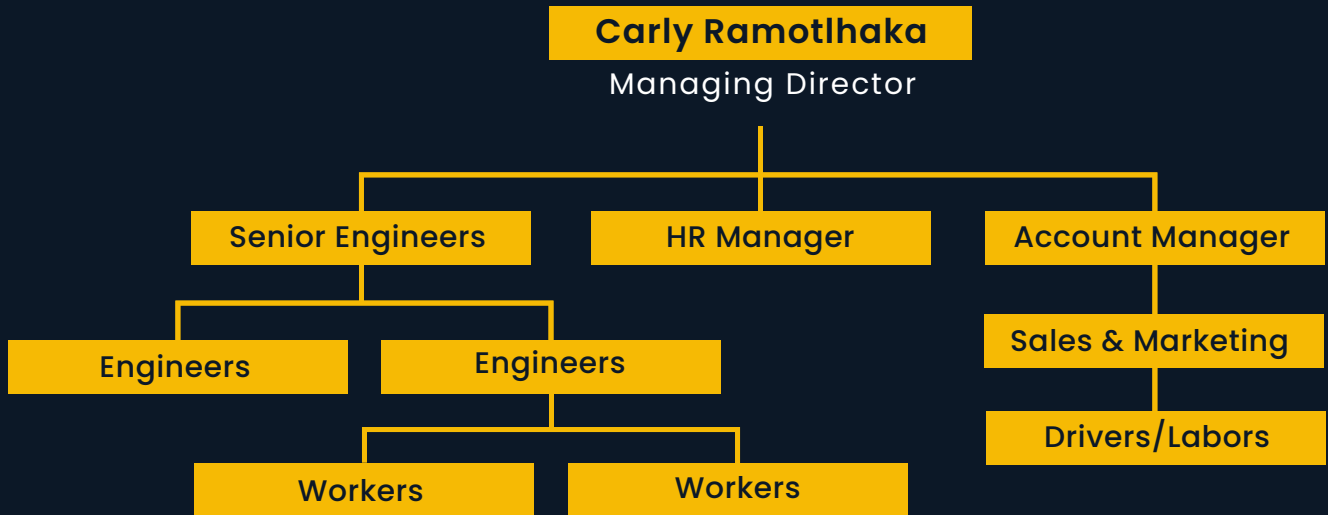
## COMPANY VALUES

We are driven by continuous improvement. We challenge the way things are done, to enhance our effectiveness & better our value proposition. We embrace change and challenges

We are qualified, skilled and committed. We set ourselves high standards, both ethically and in our work and we value excellence in all that we do.

We are responsible for our actions and accountable for our decisions. We keep our promises and this extends to earning the trust of our stake holders.

# COMPANY STRUCTURE OR ORGANOGRAM



In terms of staffing **Cr Minerals Proprietary Limited** thus far managed to fill up posts of Managing Director, Executive Director, Engineers, Human Resource, Procurement & Logistics officer and two heavy duty drivers. The rest of the positions remain vacant and will be filled up as and when the company expands. Our working team is highly trained & has professional experiences in the fields of mining, mineral industry, mining and exploration services. The company is led by professional experts in their fields of work with sufficient knowledge.





## OUR SERVICES

### **MINING AND MINERAL EXPLORATION SERVICES**

Our company consist of geologists who have expert knowledge of the mechanisms of Minerals, formations and distribution within a wide range of geological and tectonic settings.

The exploration services we provide include target generation, field mapping & analysis, remote sensing, exploration strategy and governmental advice, health & safety guidance, and programme implementation.

- > ***Security assessment and operation emergency procedure development.***
- > ***Security & situational awareness training.***
- > ***First aid & travel health training Corporate health, safety, and security management.***
- > ***Personal travel safety assessments and training.***
- > ***Vehicle travel safety awareness training.***

### **COMMODITIES**

- ✓ **Cobalt**
- ✓ **Copper**
- ✓ **Gold**
- ✓ **Diamond**
- ✓ **Iron Ore**
- ✓ **Manganese**
- ✓ **Nickel**
- ✓ **Rare EarthsElements**
- ✓ **Rhodium**
- ✓ **Silver**
- ✓ **Lithium**
- ✓ **All Minerals**

## HEALTH, SAFETY & QUALITY ASSURANCE AT WORK

The Cr Minerals envisages injury-free production as a result of safe working environments for all employees. To this end, we ensure that our workers are up to date with the latest safety standards and procedures.

Implementing our own internal safety systems, in addition to mine specific safety systems, placing our employee -s' health & safety above everything, continually training our employees to work safely, adhering to our clients' on site safety requirements & abiding by the mining regulations.

We have a robust internal safety and quality assurance function, staffed by a team of experts. Our focus falls on working to mitigate the top workplace risks, while entrenching knowledge of the mining and mineral exploration health & safety Protocols. At the same time, bottom-up incident reporting is used weekly to identify areas for behaviour or systems improvement.

Our safety compliance ensures that we contribute to a zero-harm environment. Each site manager & supervisor compiles a safety roster for the month ahead, featuring predetermined safety indicators. We also conduct monthly audits—both surface and underground to measure compliance. The results of these are presented at our meetings, where solutions & actions are devised to deal with non-compliance.



# OUR PHILOSOPHY

We aim to establish ongoing communication and training programmes to increase individual awareness levels of safety, health and environmental issues, responsibilities and accountabilities. At Cr Minerals we promote responsible actions to exercise care in conserving the natural environment. Where unavoidable disturbances are made; rehabilitation is undertaken to ecological standards specified by land owners and legislation as a minimum.

At Cr Minerals we perform internal and external audits on departments and divisions to ensure stated performance levels are achieved and maintained. We ensure that sub contractors and service providers to Cr Minerals, conform to laid down requirements set by the company and in line with the principles of the SHEQ management system.

We making sure we provide adequate financial and physical resources to achieve SHEQ management objectives in an effective and productive manner.

## AFFIRMATIVE ACTION POLICY

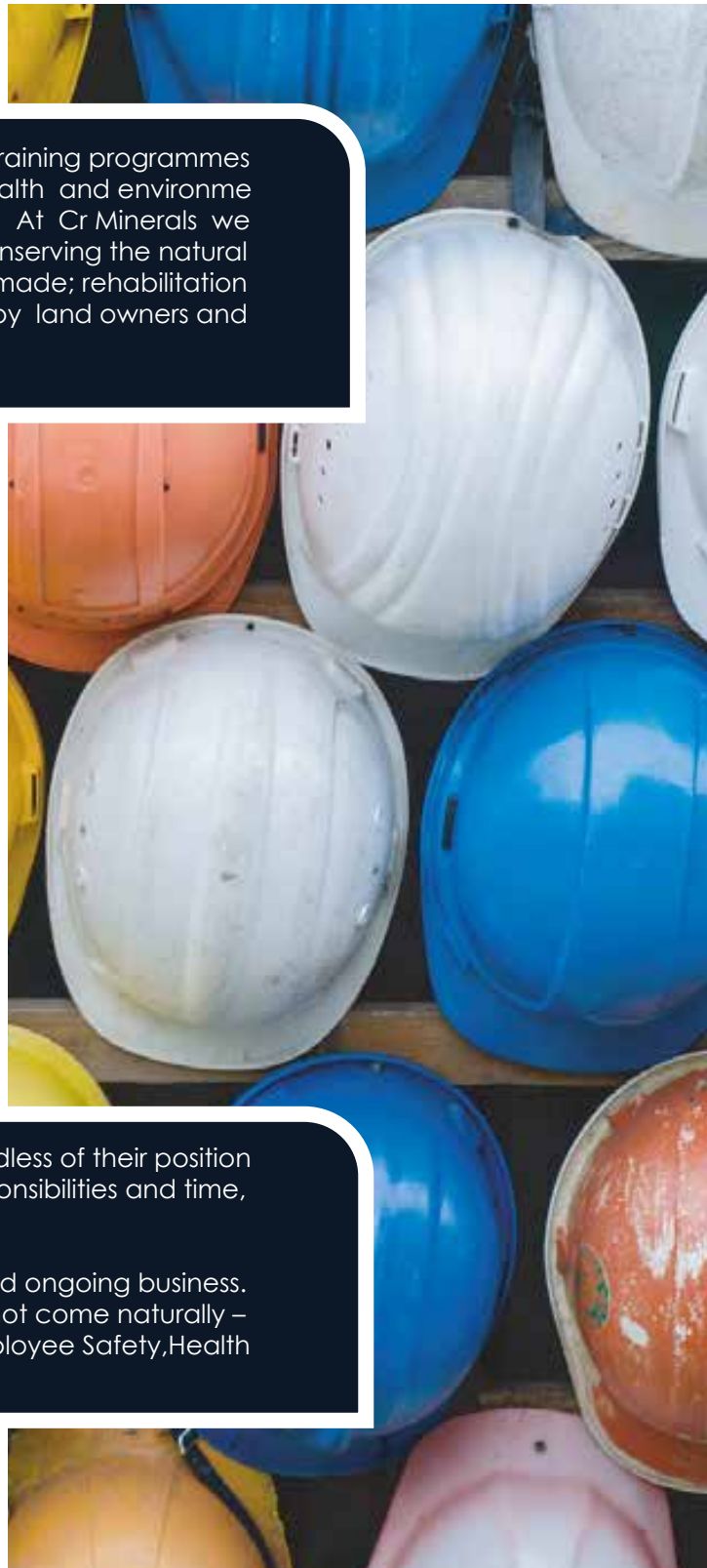
Ensuring that every employee has a valid role regardless of their position and skills and always respecting each other's responsibilities and time, quality and cost control.

Training is an essential part of safe workplaces and ongoing business. Safety, Health and Environmental Awareness does not come naturally – management must teach, motivate & sustain employee Safety, Health and Environmental Knowledge to eliminate injuries.

We believe in accelerating the participation of historically marginalized personnel starting from bottom up to professionals without compromising the quality of services required.

Forming mutual beneficial alliances and joint ventures with firm in similar fields owned by Botswana citizens, with a motive of sharing skills and developing expertise in the field. The Company is committed to develop and train employees at all levels so that they can reach their full potential with a particular focus on those who were previously disadvantaged.

Implement affirmative Action that will result in the internally hierarchy of diversity of our society.





Cobalt, Copper, Gold, Diamond, Iron Ore, Manganese, Nickel,  
Rare Earths Elements, Rhodium, Silver, Lithium & All Gemstones